

Scan2CAD

Fully working trial available -
www.softcover.com

Automatic
Conversion
Settings for:
Architecture
CNC Profiles
Contour Map
Electrical
Mechanical
Outlines
Site Plans
Sketches

Convert scanned drawings to CAD and CNC (Raster to Vector Conversion)

Scan2CAD converts scanned drawings into DXF files for quick and easy editing in a CAD program. Any CAD program! It's a complete, professional raster to vector conversion solution.

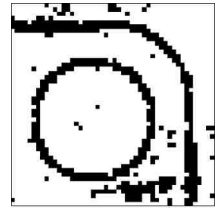
Simply scan from supported or TWAIN-compliant scanners or open popular raster formats, like BMP, CAL, TIF, etc. Quickly tidy up dirty scans and use supplied default settings to easily and automatically vectorise any drawing of any size.

Scan2CAD's results are as good as automatic vectorisation gets at any price! It recognises the fundamental building blocks of your drawings - lines including dashed and dotted lines, arcs, circles, lined hatch patterns, arrow lines, Bezier curves and text.

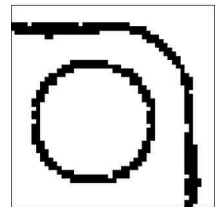
There's NO limit on scanner or paper sizes. It works with all CAD programs, like AutoCAD, LT, etc. Whatever your need, infrequent or everyday, one drawing or many, black-and-white or colour, Scan2CAD will convert your paper drawings into DXF files for fast and efficient editing in CAD.

Scan2CAD v7.5. Swing from raster to vector with ease!

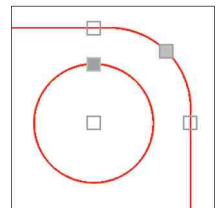
SCAN



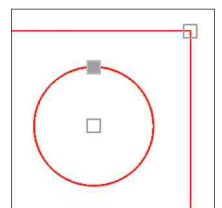
CLEAN



CONVERT



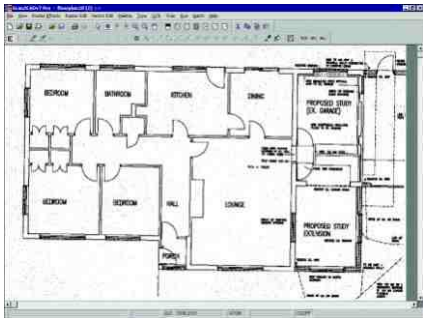
EDIT



Convert scanned drawings to DXF in three easy steps

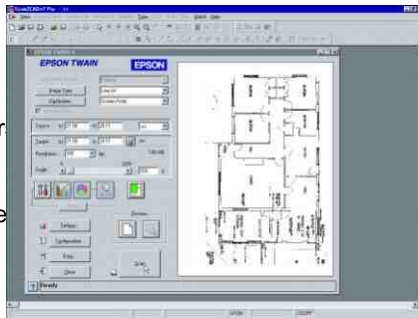
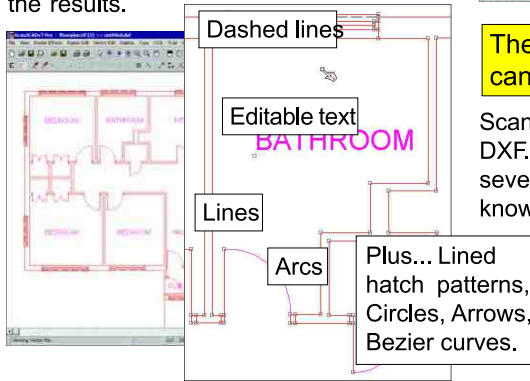
1. Scan or load the image

Scan2CAD lets you scan with popular TWAIN-compliant desktop scanners. Large drawings can be scanned on desktop scanner as a set of "tiles", then re-assembled and vectorised in Scan2CAD. Or you can scan using Shapemakers' Deskan scanner or large format scanners, like Contex, Colortrac, etc. to save A1 or A0 drawings as BMP, CAL, TIFF files, etc. which Scan2CAD will open.



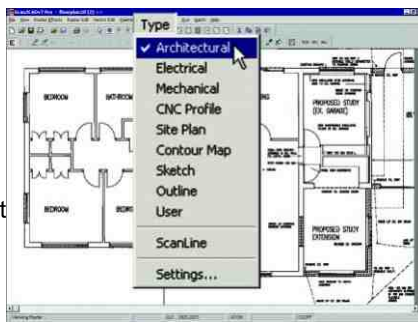
3. Vectorize

Scan2CAD is supplied with default conversion settings. Select the one that best describes your drawing - Architectural, Map, CNC, etc. Then vectorise it with a single icon click. Settings can be adjusted to fine-tune the results.



2. Clean the image

Dirty images (left) can be automatically despeckled. Skew drawings can be rotated and straightened. Once the scanned drawing is clean and square (below) it is ready to be converted into a vector DXF file.



The end result - a DXF file you can edit in CAD

Scan2CAD saves black and white and colour DXF. You can scale the DXF file to size in several ways. One easy way is to specify a known distance between two points on the image. Once you've saved the DXF file it can be edited in your PC CAD program or in Scan2CAD which has special one click "SnapTidy" tools for fast vector editing and tidy-up.

Acclaimed around the world

First released in 1995, Scan2CAD is used by thousands of CAD and CNC professionals in over 80 countries worldwide.

2007 "Rich in features and matches considerably more expensive packages." Desktop Engineering Magazine, USA.

2005 "Amazing" CAD&CG Mag, Japan.

2004 "Has most of the functionality of programs costing 10 x more" Cadalyst, USA.

2003 "A very high standard of conversion" Model Engineers Workshop, UK.

2002 "Excellent value ... thoroughly recommended" Royal Incorp. of Architects in Scotland Practice Information, UK.

2001 "Astonishingly powerful and a great

bargain. Outstanding. 5 out of 5 stars." Cadalyst, USA.

2000 "Impressive" CADDesk, UK.

1999 "A major turning point in scan conversion cost effectiveness. Highly recommended" MultiCAD, AUS.

"Scan2CAD v7 Pro is very impressive, producing outstanding results from the many scanned images converted so far. It compares very well to other packages I've looked at, some costing up to £3000."

Carl Pickering, Document Technician, Preston City Council, UK.

"Many thanks for the great advice. Your rapid response to problems/questions and credible suggestions are unmatched when compared to other software firms we've dealt with. Thanks for the high standard of service".

Paul Michor, Custom Metal Fabrication, Hooper Corporation, USA.

Main Features

Scan or load

Can be used with any size scanner, from desktop models to A0/E-size and larger. Acquire from TWAIN compliant scanners. Tile large drawings using a desktop scanner, merge tiles, vectorise. Load black and white, greyscale or colour raster images. Load any popular raster format like BMP, CAL, TIFF, PNG, GIF, JPG, PCX etc.

Clean - raster tidy-up

Dedicated tidy-up tools - automatically despeckle dirty drawings, fill holes, mend broken lines etc. Des skew skewed images. Raster drawing and editing tools. Colour palette editing tools including automatic colour reduction.

Convert - vectorizing

Supplied with default conversion settings - Architectural, Mechanical, Electrical, CNC, Contour Maps, Site Plans, Sketch, Outline. Edit default settings to fine-tune results. Recognises continuous, dashed and dotted lines, arcs, circles, lined hatch patterns, arrows, Bezier curves and text (OCR). Converts basic text fonts to editable text using OCR. Extend OCR with Font Training*. Type in TrueType characters as 100% accurate vector outlines. Batch convert many drawings at once.

Edit

Vector draw and erase tools. Edit vectors with raster image displayed beneath (Raster Overlay). One click editing tools rapidly tidy up vectorised drawings. One click editing of line styles. Spellcheck OCR'd text for quick and easy editing with customisable Dictionary*.

Scale and save vectors

Three methods of scaling include scale by specifying distance between two points. Save vectors as colour B/W DXF. Save DXF that can be edited in any CAD or CNC program including all versions of AutoCAD and LT.

System requirements

Requires Windows 95, 98, ME, NT4, 2000 or XP with minimum 32 Mb RAM.

Package includes manual, CD, support.

* Feature available in Pro version only. Regular does not have: OCR font training, dictionary spellcheck, colour vectorisation, batch conversion, command line support.



Shapemakers, 29 Kensal Street, Moorooka, Brisbane, QLD 4105

Tel: +61 7 3848 7371 - Email: sales@deskan.com